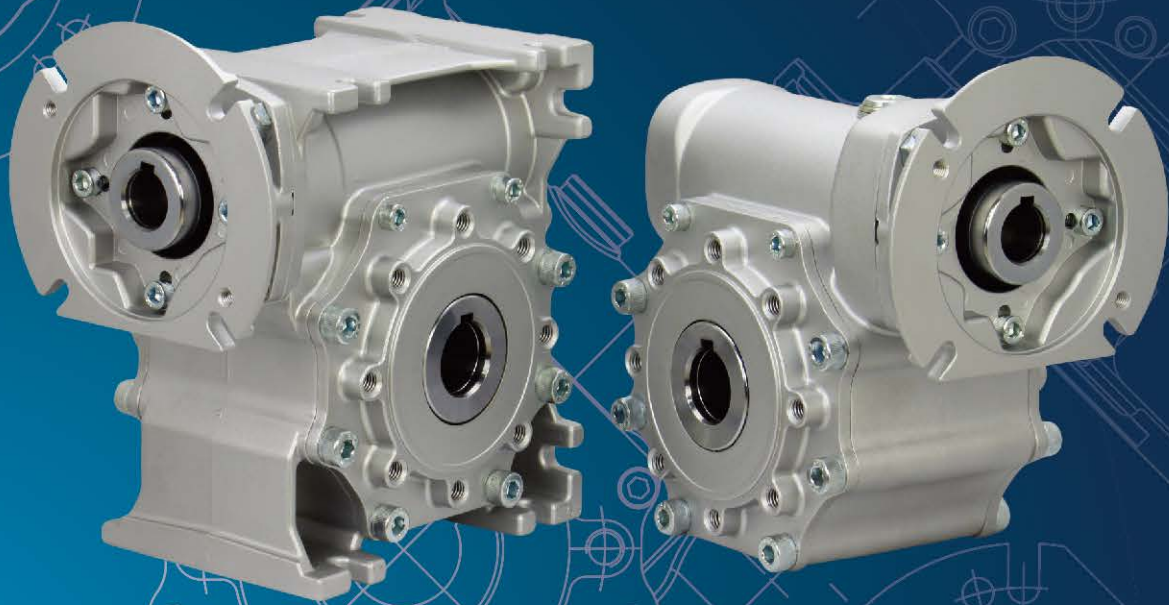


**CONC.Ji**  
*gearing the future*

**MT / MK**

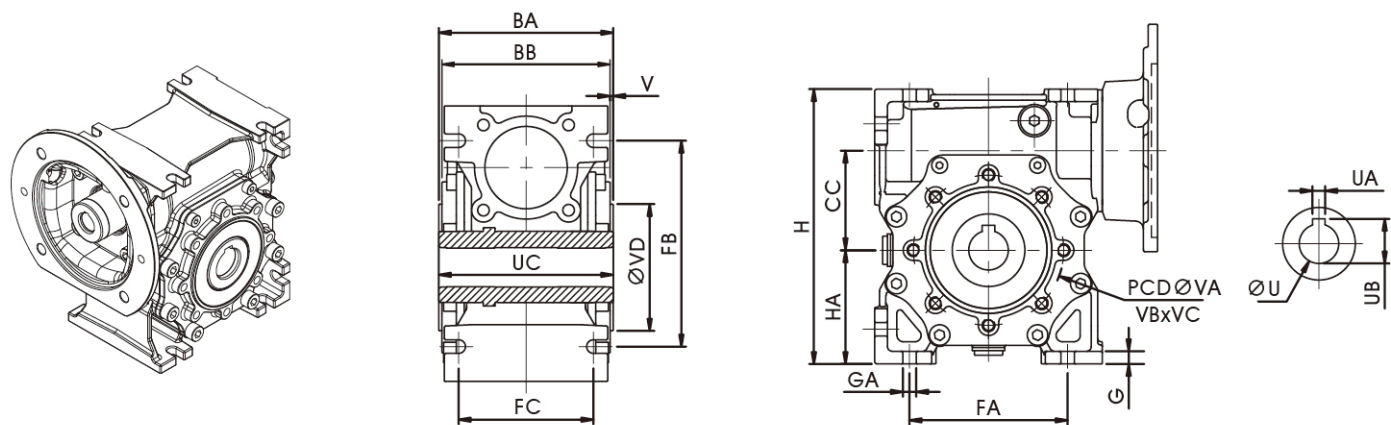


**鋁合金蝸輪減速機**

**ALUMINUM**

**WORM GEAR REDUCER**

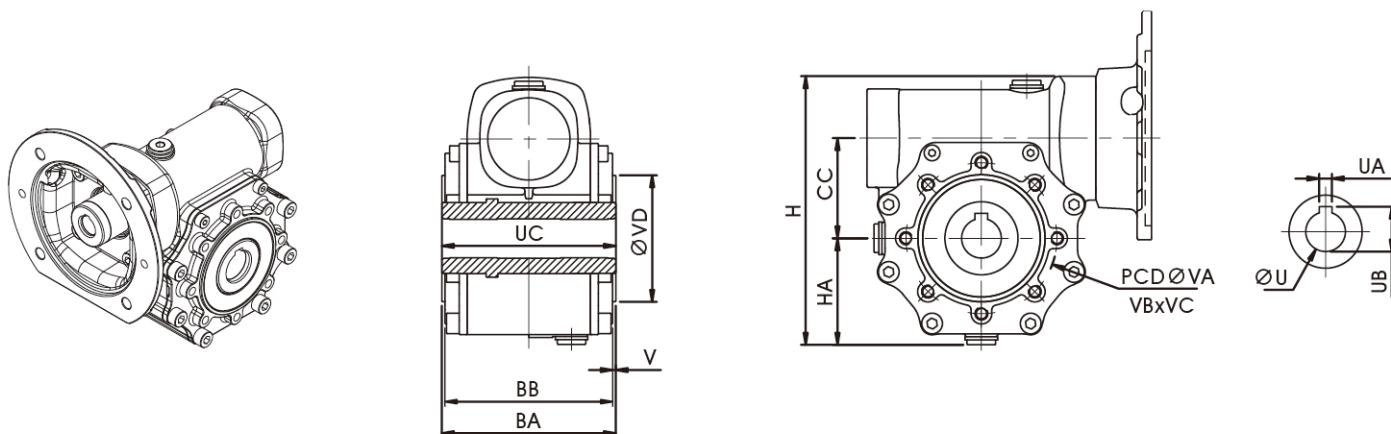
## 機型 Type : MTEQM / MTGQM



規格 Size	BA	BB	H	HA	CC	U	UA	UB	UC	V	VA	VB	VC	VD	FA	FB	FC	G	GA
30	63	58	97	40	30	14	5	16.2	63	2.5	65	M6	10	55	54	71	44	5	6.5
40	78	73	121.5	50	40	18	6	20.8	78	2.5	75	M6	9	60	70	90	60	6.5	6.5
50	92	87	144	60	50	25	8	28.3	92	2.5	85	M8	12	70	80	104	70	7	8.5
63	110	106	174	72	63	25	8	28.3	110	2	95	M8	14	80	100	130	85	8	8.5
75	120	114	205	86	75	28	8	31.3	120	3	115	M8	14	95	120	153	90	10	11
90	140	134	238	103	90	35	10	38.3	140	3	130	M10	18	110	140	172	100	11	13
110	155	148	295	127.5	110	42	12	45.3	155	3.5	165	M10	18	130	170	210	115	14	14

備註: 1) 110#為鑄鐵本體      2) 添加合成潤滑油(PAG460)  
 Note: 1) 110# Cast Iron Housing    2) Filled with Polyalkylene Glycol (PAG460)

## 機型 Type : MKEQM / MKGQM

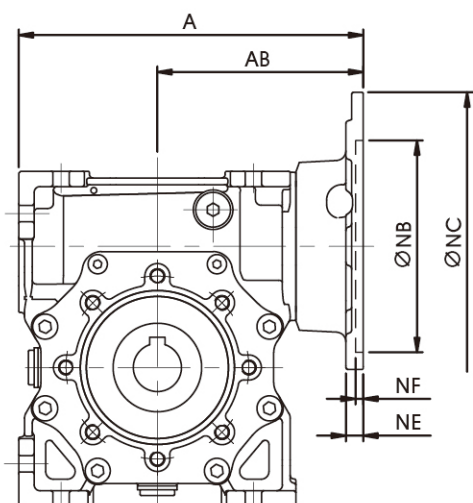
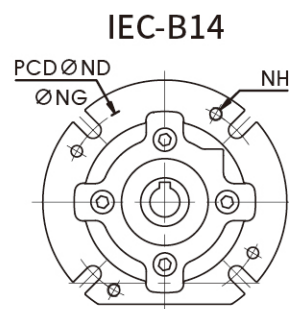
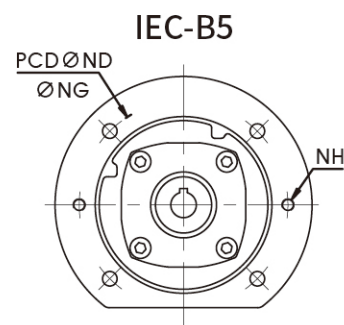


規格 Size	BA	BB	H	HA	CC	U	UA	UB	UC	V	VA	VB	VC	VD
30	63	58	94	37	30	14	5	16.2	63	2.5	65	M6	10	55
40	78	73	124.5	52.5	40	18	6	20.8	78	2.5	75	M6	9	60
50	92	87	139	57	50	25	8	28.3	92	2.5	85	M8	12	70
63	110	106	169	67	63	25	8	28.3	110	2	95	M8	14	80
75	120	114	194	79.5	75	28	8	31.3	120	3	115	M8	14	95
90	140	134	238.8	96.3	90	35	10	38.3	140	3	130	M10	18	110
110	155	148	282.8	119.3	110	42	12	45.3	155	3.5	165	M10	18	130

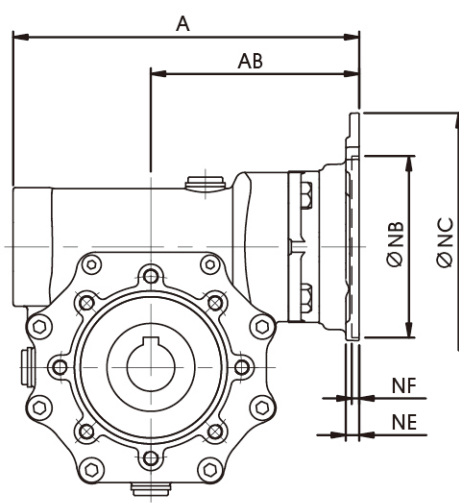
備註: 1) 110#為鑄鐵本體      2) 添加合成潤滑油(PAG460)  
 Note: 1) 110# Cast Iron Housing    2) Filled with Polyalkylene Glycol (PAG460)

# 入力法蘭 Input Flange

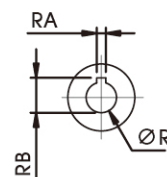
功率 kW	IEC 框號 Frame		R	RA	RB	NB	NC	ND	NE	NF	NG	NH
0.18 kW (1/4 HP)	D63	B5	11	4	12.8	95	140	115	10	4	9	M8
		B14				60	90	75	5	4	6	M5
	D67	B5				110	160	130	8	4	9	M8
0.37 kW (1/2 HP)	D71	B5	14	5	16.3	110	160	130	8	4	9	M8
		B14				70	105	85	7	4	7	M6
0.75 kW (1 HP)	D80	B5	19	6	21.8	130	200	165	12	4	11	M10
		B14				80	120	100	8	4	7	M6
1.5 kW (2 HP)	D90	B5	24	8	27.1	130	200	165	12	4	11	M10
		B14				95	140	115	10	4	9	M8
2.2 kW (3 HP)	D100	B5	28	8	31.3	180	250	215	12	4	14	M12
		B14				110	160	130	9	4	9	M8
3.7 kW (5 HP)	D112	B5	28	8	31.3	180	250	215	12	4	14	M12
		B14				110	160	130	9	4	9	M8
5.5 kW (7.5 HP)	D132	B5	38	10	41.3	230	300	265	15	4	14	M12



MTEQM / MTGQM



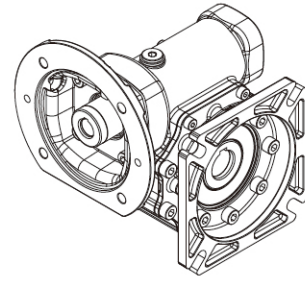
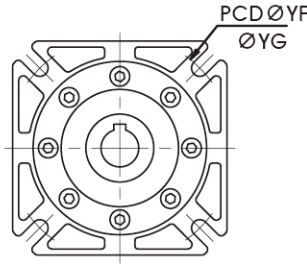
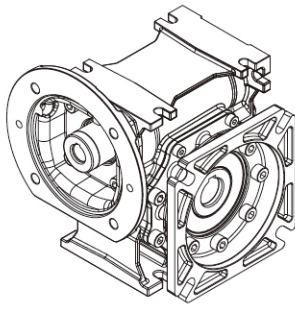
MKEQM / MKGQM



IEC 框號 Frame	30		40		50		63		75		90		100 MT		110 MK		
	A	AB	A	AB	A	AB	A	AB	A	AB	A	AB	A	AB	A	AB	
D63	B5	-	-	133.5	83.5	150	90	-	-	-	-	-	-	-	-	-	-
	B14	101	61	131.5	81.5	-	-	-	-	-	-	-	-	-	-	-	-
D67	B5	-	-	131.5	81.5	148	88	-	-	-	-	-	-	-	-	-	-
D71	B5	-	-	131.5	81.5	148	88	179	107	207	121	-	-	-	-	-	-
	B14	-	-	131.5	81.5	148	88	179	107	207	121	-	-	-	-	-	-
D80	B5	-	-	-	-	157	97	184	112	212	126	253	150	295.5	168	288	168
	B14	-	-	-	-	150	90	181	109	209	123	-	-	-	-	-	-
D90	B5	-	-	-	-	-	-	184	112	212	126	253	150	295.5	168	288	168
	B14	-	-	-	-	-	-	181	109	209	123	253	150	295.5	168	288	168
D100	B5	-	-	-	-	-	-	-	-	207	121	253	150	295.5	168	288	168
	B14	-	-	-	-	-	-	-	-	-	-	253	150	295.5	168	288	168
D112	B5	-	-	-	-	-	-	-	-	-	-	-	-	295.5	168	288	168
	B14	-	-	-	-	-	-	-	-	-	-	-	-	295.5	168	288	168
D132	B5	-	-	-	-	-	-	-	-	-	-	-	-	295.5	168	288	168

# 機型 Type : MTEQM..F

# 機型 Type : MKEQM..F

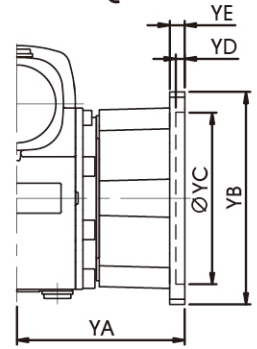
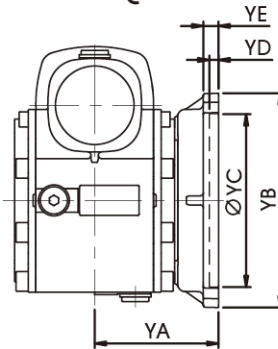
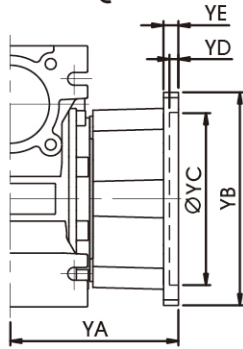
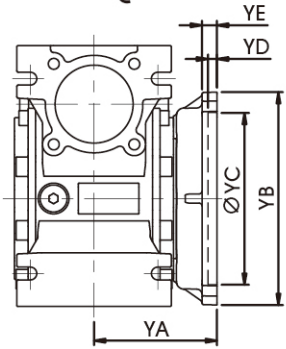


MTEQM..FA

MTEQM..FB

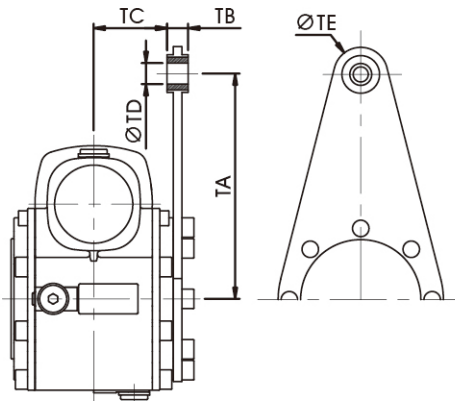
MKEQM..FA

MKEQM..FB



規格 Size	FA 法蘭 / Flange							FB 法蘭 / Flange						
	YA	YB	YC	YD	YE	YF	YG	YA	YB	YC	YD	YE	YF	YG
30	54.5	84	50	4	6	68	6.5	-	-	-	-	-	-	-
40	67	95	60	4	7	75	9	97	95	60	4	7	75	9
50	90	110	70	5	9	85	11	120	110	70	5	9	85	11
63	82	142	115	6	10	150	11	112	142	115	6	10	150	11
75	111	170	130	6	13	165	14	90	140	110	6	13	130	11
90	111	200	152	6	13	175	14	122	210	180	6	18	215	14
110	131	260	170	6	15	230	14	-	-	-	-	-	-	-

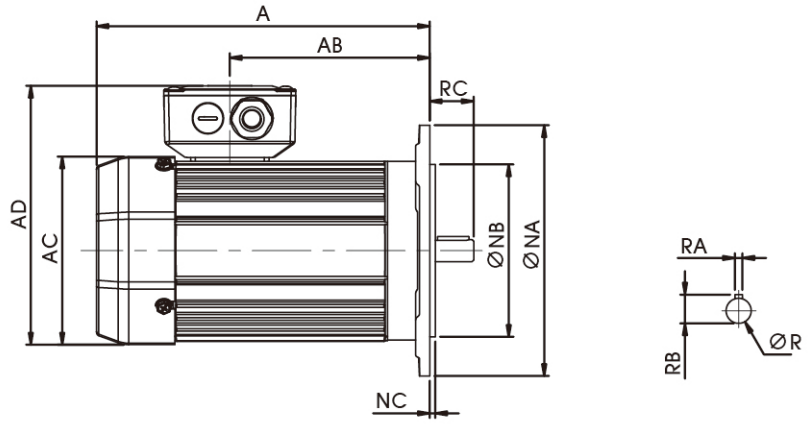
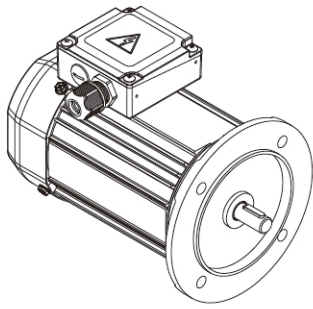
# 機型 Type : MKEQM..T



規格 Size	TA	TB	TC	TD	TE
30	85	14	23.85	8	15
40	100	14	31.35	10	18
50	100	14	38.35	10	18
63	150	14	48.85	10	18
75	200	25	47.35	20	30
90	200	25	57.35	20	30
110	250	30	62.50	25	35

機型 Type			規格 Size	速比 Ratio	入力介面 Input	安裝選項 Mount Opt.	方向配置 Config.			
<u>MK</u>	<u>E</u>	<u>QM</u>	<u>63</u>	<u>30</u>	<u>D80</u>	<u>FA</u>	<u>R</u>			
1	2	3	4	5	6	7	8			
1	MT	方形本體	30	5	D63	7	FA	出力法蘭A		
		Square Housing	40	7.5	D67			Output Flange A		
MK	Round Housing	圓形本體	50	10	D71		FB	出力法蘭B		
		Round Housing	63	15	D80			Output Flange B		
2	-	實心入力軸	75	20	D90	8	T	扭力臂		
			90	25	D100				Torque Arm	
		E	B5 入力法蘭	110	30			D112	R	右
			B5 Input Flange		40			D132		
G	B14 入力法蘭	110	50		L	左				
			B14 Input Flange	60				Left		
3	-	實心出力軸		80						
			Solid Output		100					
QM	中空出力軸									
		Hollow Output								

# 三相交流馬達 (鋁框) 3 Phase AC Motor (Aluminum)

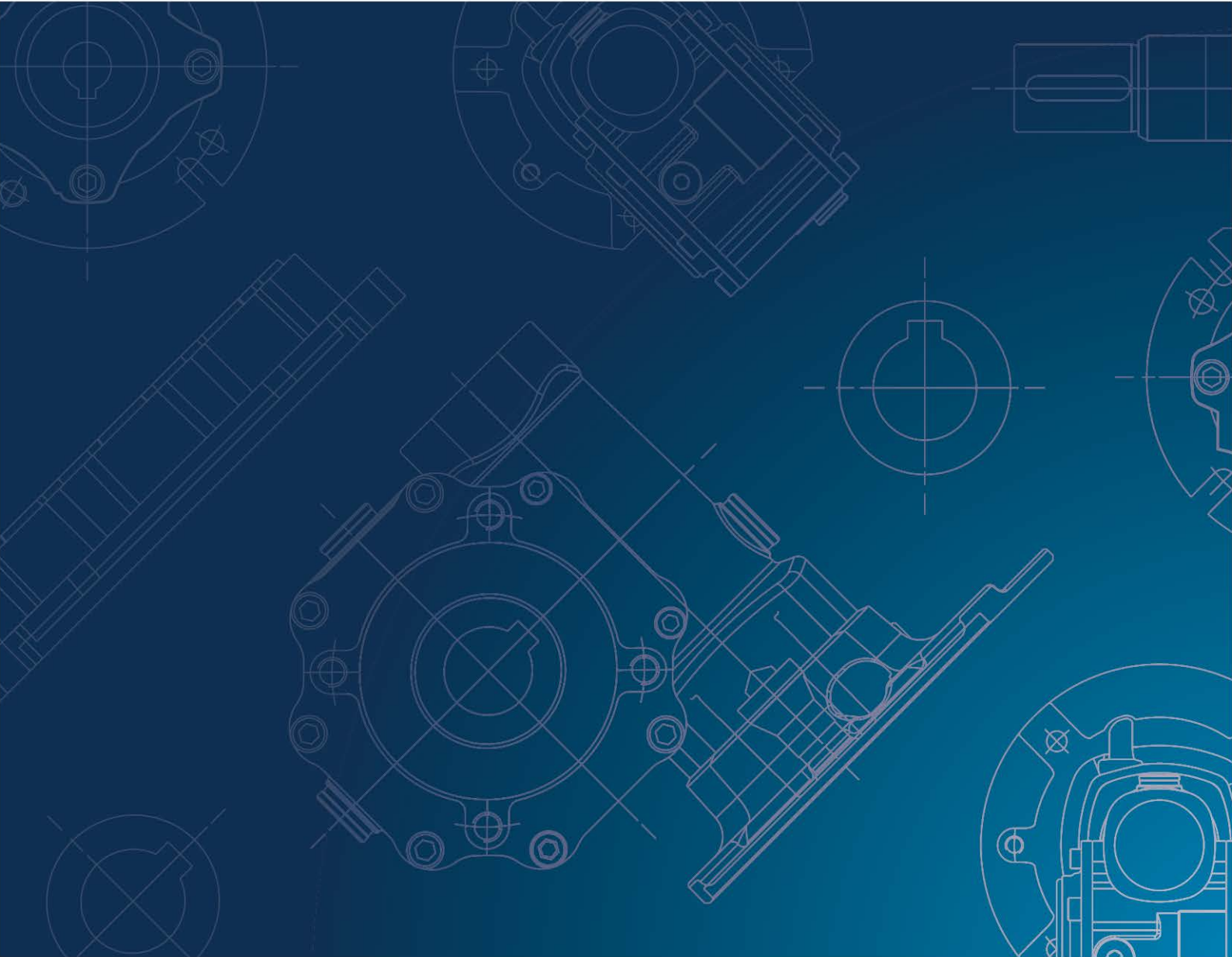


功率 kW	IEC 框號 Frame	A	AB	AC	AD	B5			B14			R	RA	RB	RC
						NA	NB	NC	NA	NB	NC				
0.18 kW (1/4 HP)	D63	215	125	129	168	160	110	3.5	90	60	3.5	11	4	12.5	23
0.37 kW (1/2 HP)	D71	237	147	129	168	160	110	3.5	105	70	3.5	14	5	16	30
0.75 kW (1 HP)	D80	274	163	161	200	200	130	3.5	120	80	3.5	19	6	21.5	40
1.5 kW (2 HP)	D90	334	223	161	209	200	130	3.5	140	95	3.5	24	8	27	50
2.2 kW (3 HP)	D100	368	233	212	255	250	180	4	160	110	4	28	8	31	60
3.7 kW (5 HP)	D112	408	273	212	255	250	180	4	160	110	4	28	8	31	60

## 馬力 / 減速比選配表 Motor / Ratio Selection Chart

規格 Size	框號 Frame	減速比 Ratio													
		5	7.5	10	15	20	25	30	40	50	60	80	100		
30	D56	Standard	Standard	Standard	Standard	Standard	Standard	Standard	Standard	Standard	Standard	Standard	Standard	Standard	
	D63	Standard	Standard	Standard	Standard	Standard	Standard	Standard	Standard	Standard	Standard	Standard	Standard	Standard	
40	D56	Standard	Standard	Standard	Standard	Standard	Standard	Standard	Standard	Standard	Standard	Standard	Standard	Standard	
	D63	Standard	Standard	Standard	Standard	Standard	Standard	Standard	Standard	Standard	Standard	Standard	Standard	Standard	
40	D71	Standard	Standard	Standard	Standard	Standard	Standard	Standard	Standard	Standard	Standard	Standard	Standard	Standard	
	D63	Standard	Standard	Standard	Standard	Standard	Standard	Standard	Standard	Standard	Standard	Standard	Standard	Standard	
50	D71	Standard	Standard	Standard	Standard	Standard	Standard	Standard	Standard	Standard	Standard	Standard	Standard	Standard	
	D80	Standard	Standard	Standard	Standard	Standard	Standard	Standard	Standard	Standard	Standard	Standard	Standard	Standard	
63	D71	Standard	Standard	Standard	Standard	Standard	Standard	Standard	Standard	Standard	Standard	Standard	Standard	Standard	
	D80	Standard	Standard	Standard	Standard	Standard	Standard	Standard	Standard	Standard	Standard	Standard	Standard	Standard	
63	D90	Standard	Standard	Standard	Standard	Standard	Standard	Standard	Standard	Standard	Standard	Standard	Standard	Standard	
	D71	Standard	Standard	Standard	Standard	Standard	Standard	Standard	Standard	Standard	Standard	Standard	Standard	Standard	
75	D80	Standard	Standard	Standard	Standard	Standard	Standard	Standard	Standard	Standard	Standard	Standard	Standard	Standard	
	D90	Standard	Standard	Standard	Standard	Standard	Standard	Standard	Standard	Standard	Standard	Standard	Standard	Standard	
90	D80	Standard	Standard	Standard	Standard	Standard	Standard	Standard	Standard	Standard	Standard	Standard	Standard	Standard	
	D90	Standard	Standard	Standard	Standard	Standard	Standard	Standard	Standard	Standard	Standard	Standard	Standard	Standard	
90	D100	Standard	Standard	Standard	Standard	Standard	Standard	Standard	Standard	Standard	Standard	Standard	Standard	Standard	
	D80	Standard	Standard	Standard	Standard	Standard	Standard	Standard	Standard	Standard	Standard	Standard	Standard	Standard	
110	D90	Standard	Standard	Standard	Standard	Standard	Standard	Standard	Standard	Standard	Standard	Standard	Standard	Standard	
	D100	Standard	Standard	Standard	Standard	Standard	Standard	Standard	Standard	Standard	Standard	Standard	Standard	Standard	
110	D112	Standard	Standard	Standard	Standard	Standard	Standard	Standard	Standard	Standard	Standard	Standard	Standard	Standard	
	D132	Standard	Standard	Standard	Standard	Standard	Standard	Standard	Standard	Standard	Standard	Standard	Standard	Standard	

標準選配 Standard  
 特殊選配 Optional  
 無法選配 N/A



**GONG.Ji**

台灣工機廠股份有限公司  
TAIWAN GONG JI CHANG CO., LTD.

All Rights Reserved

MTMK.202008.B.1500