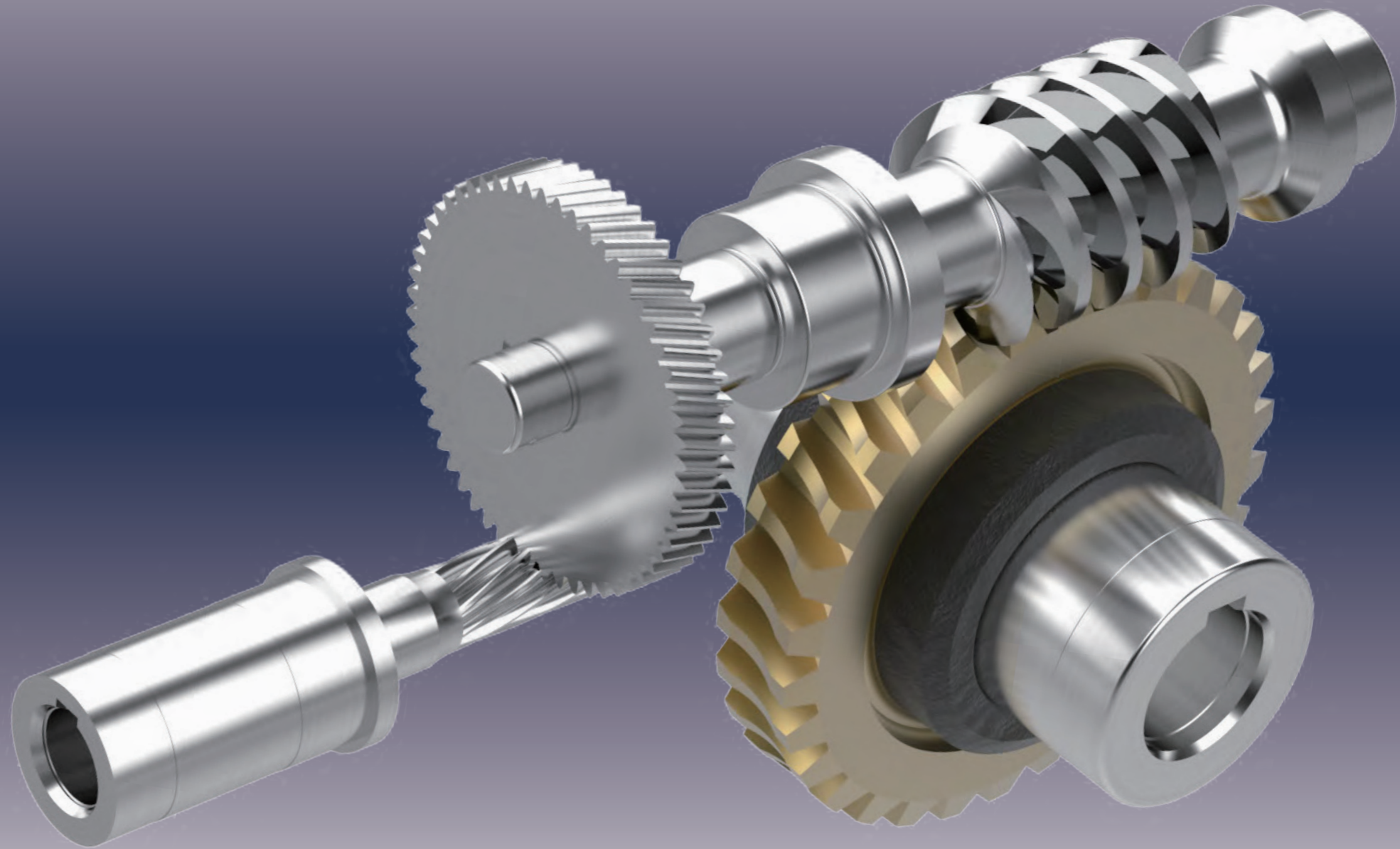


**GONG.Ji** SINCE 1940



**GONG.Ji**

TAIWAN GONG JI CHANG CO., LTD.  
No. 1, Aly. 15, Ln. 39, Neixi Rd.  
Luzhu, Taoyuan, Taiwan 338  
T : +886-3-3241000  
F : +886-3-3245566  
E : info@gongjdrive.com  
www.gongjdrive.com

# Company Overview

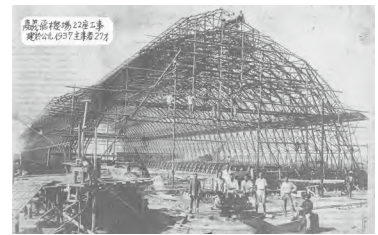
## Mission

“Provide quality transmission solutions”

For years, GONGJI has concentrated in manufacturing high quality gear reducers. By investment in equipment and personnel, GONGJI continues to improve its engineering capability, production capability, process efficiency, and quality control. Creating value for customers is the never-ending goal and effort at GONGJI.

## Company History & Highlights

- 1940 : Late president, Mr. Hsiu-Pao Hsu and Mr. Noda (Japanese) establishes “Taiwan Working Corp.” in Taipei.
- 1941 : Completes Chia-I airport hangars, which are still in service.
- 1945 : After World War II, Mr. Noda returns to Japan and Mr. Hsu assumes remaining shares and becomes sole owner and renames company to “Taiwan Working Co., Ltd.”
- 1947 : “Taiwan Working Co., Ltd.” renames to “Taiwan Gong Ji Chang”.
- 1950 : Becomes qualified supplier of vehicles for Taiwan Highway Bureau and peripheral equipment for Taiwan Railway Bureau.
- 1955 : Wins “Outstanding Vendor” award from Taiwan Railway Bureau.
- 1958 : Undertakes construction of compound mill and excavator buckets project for Asia Cement Corp.
- 1960 : Completes new pressure vessel and automatic mixer project for Nankang Tire Company.
- 1960 : Undertakes mixers, fermentation tanks, and piping projects for “Taiwan Tobacco and Wine Monopoly Bureau”.
- 1963 : “Taiwan Gong Ji Chang” reorganizes to “Taiwan Gong Ji Chang Co., Ltd.” until present.
- 1965 : Develops reducer product lines.
- 1968 : Completes 40Mt crane project for Hwa-Lian Power Plant.
- 1975 : Begins exporting worm gear reducers.
- 1993 : Wins “Golden Dragon” award for Best Quality Mechanical Components, issued by Central Government.
- 2000 : Obtains ISO 9001 certification.
- 2004 : Moves to expanded new factory in Taoyuan.
- 2006 : Consolidates main subcontractors to same factory location.
- 2009 : Joins American Gear Manufacturers Association (AGMA).
- 2010 : Celebrates 70 year anniversary.
- 2012 : Begins modularization of all product lines, still in-progress.



1941 Chia-I Airport Hangar



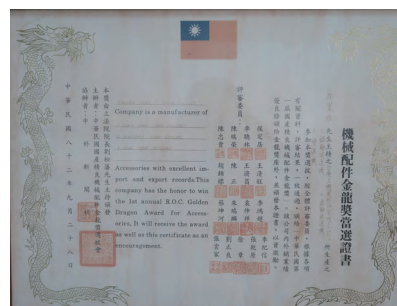
1958 Compound Mill



Taiwan Railway Bureau Award



AGMA Member



Golden Dragon Award

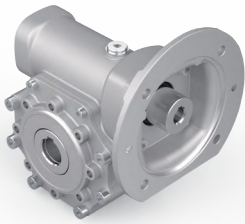


ISO 9001

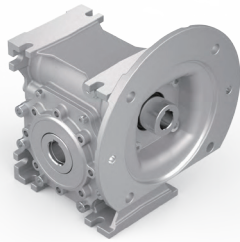
# D3 D5 Series

## Aluminium Worm Gear Reducer

Precise worm gear reducers for servo and standard applications that comes with solid or hollow output shaft. Low backlash, high power density, and excellent torque capacity characteristics. Modular design to accommodate all common motor input interfaces, accessories, and cross-series combinations with multiple stage reduction options.



D3



D5

### Single Worm Gear Reducer

D3 series for compact shaft mount

Power Capacity: 30kW max.

D5 series for versatile base mount

Power Capacity: 4kW max.

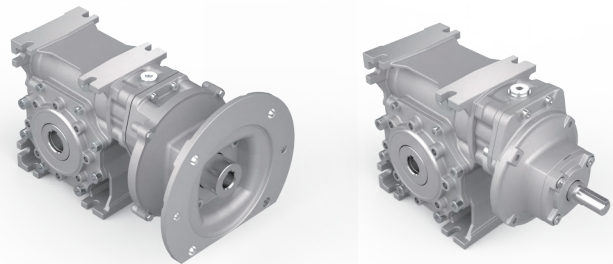
Ratio: 1/5 ~ 1/100

Input for standard IEC, NEMA, SERVO motors

## Helical Worm Gear Reducer

Modular helical pre-stage

Ratio: 1/400 max.

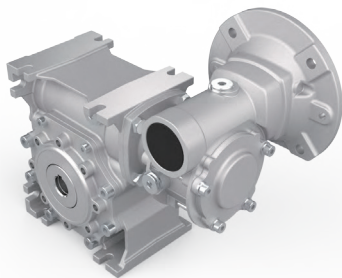


Helical Worm

## Double Worm Gear Reducer

Modular worm pre-stage

Ratio: 1/3600

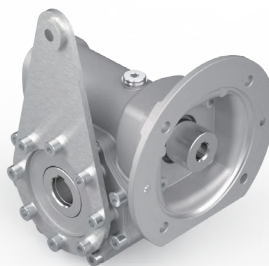


Double Worm

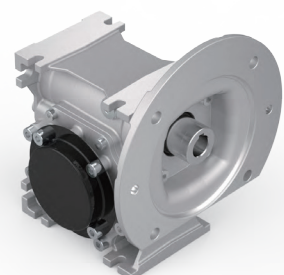
## Accessories



Output Flange



Torque Arm

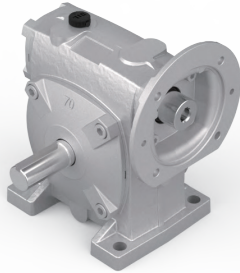


Shaft Cover

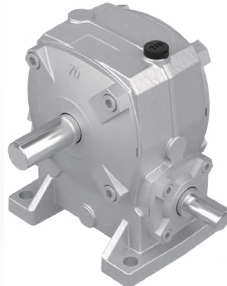
# TK BH Series

## Cast-Iron Worm Gear Reducer

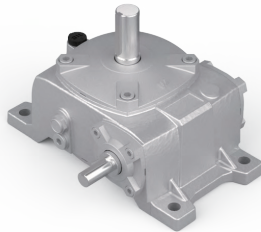
Heavy-duty worm gear reducers for toughest applications that comes with solid or hollow output shaft. Low backlash, high power density, and excellent torque capacity characteristics. Modular design to accommodate all common motor input interfaces and cross-series combinations with multiple stage reduction options.



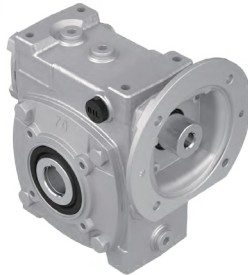
TKA



TKB



TKV



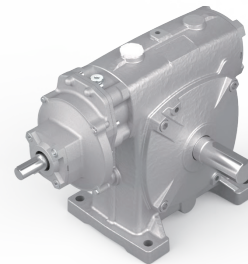
BH

## Single Worm Gear Reducer

TKA series for worm-over mounting  
TKB series for worm-under mounting  
TKV series for vertical output mounting  
BH series for universal mounting  
Power Capacity: 30kW max.  
Ratio: 1/5 ~ 1/100  
Input for standard IEC, NEMA, SERVO motors

## Helical Worm Gear Reducer

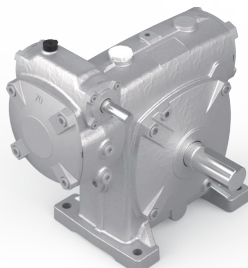
Modular helical pre-stage  
Ratio: 1/400 max.



Helical Worm

## Double Worm Gear Reducer

Modular worm pre-stage  
Ratio: 1/3600 max.



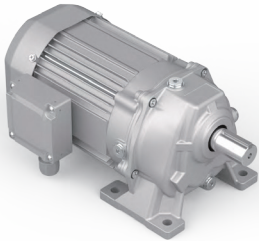
Double Worm

# G5 Series

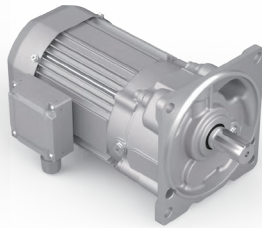
## Compact Gearmotor

Precision gears for excellent efficiency, silent operation, and low maintenance. Integrated gear head and motor for compact and light-weight characteristics. Comes in versatile base or flange mounting options. Modular design to accommodate all common motor input interfaces and cross-series combinations with multiple stage reduction options.

---



G5BA



G5FA

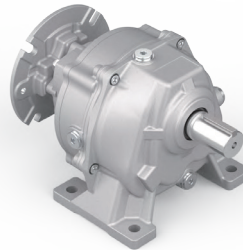
## Compact Gearmotor

G5B for base mount  
G5F for flange mount  
Rated Torque: 50 ~ 1200 Nm  
Power Capacity: 0.1 ~ 3.7kW

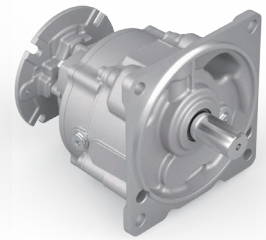
---

## Helical Gear Head - Motor Flange

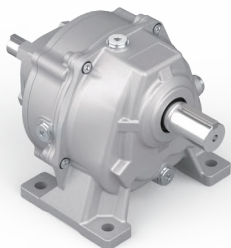
G5B for base mount  
G5F for flange mount  
Rated Torque: 50 ~ 1200 Nm  
Input for standard IEC, NEMA, SERVO motors



G5BM



G5FM



G5BS



G5FS

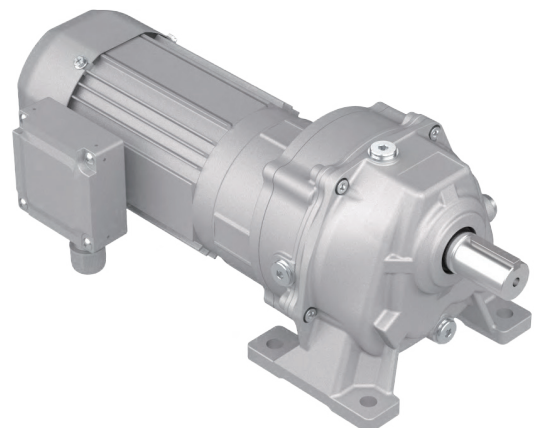
## Helical Gear Head - Solid Input

G5B for base mount  
G5F for flange mount  
Rated Torque: 50 ~ 1200 Nm  
Solid input shaft

---

## High Ratio

G5B for base mount  
G5F for flange mount  
Ratio: 1/∞

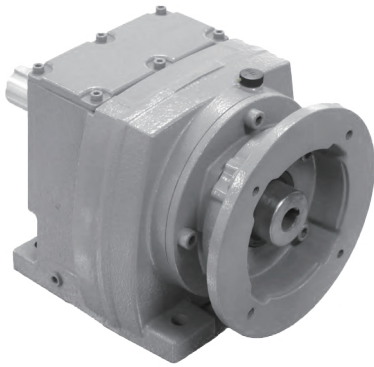


# G7 Series

## Heavy Duty Helical Gear Reducer

Heavy-duty helical gear reducers for toughest applications. Precision gears for excellent efficiency, silent operation, and low maintenance. Mounting dimensions compatible with market brands. Modular design to accommodate all common motor input interfaces and cross-series combinations with multiple stage reduction options.

---



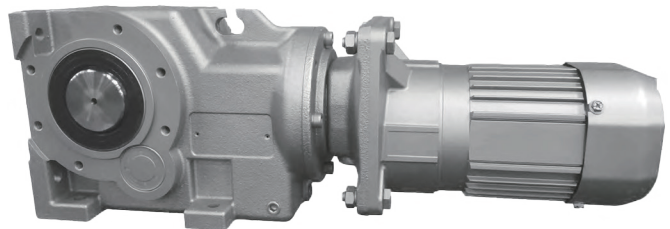
## Inline Helical Gear Reducer

Base/flange mount option  
Rated Torque: 200 ~ 4500 Nm  
Power Capacity: 0.1 ~ 30kW  
Input for standard IEC, NEMA, SERVO motors

---

## Helical Bevel Gear Reducer

Base/shaft mount option  
Rated Torque: 400 ~ 4500 Nm  
Power Capacity: 0.1 ~ 30kW  
Input for standard IEC, NEMA, SERVO motors



## Parallel Helical Gear Reducer

Base/shaft mount option  
Rated Torque 100 ~ 4500 Nm  
Power Capacity: 0.1 ~ 30kW  
Input for standard IEC, NEMA, SERVO motors



# Capabilities

## Standard Reducers

Our standard reducers are dimensionally compatible with most market brands, and enhanced with characteristics such as modular design and low-backlash that are unique to GONGJI. With such a wide selection of designs, materials, interface, accessories, and mounting options readily available, you are sure to find a solution for your power transmission needs.

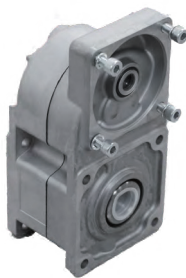
---

## Custom Reducers

GONGJI has been developing optimized custom reducer solutions for our customers for decades, utilizing our excellent engineering capabilities and vast application knowledge accumulated throughout the years. These are at your service when you enquire with your unique requirements.



**Anchor Winch**  
Aluminium housing  
Stainless steel shaft  
Custom interface



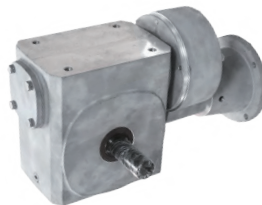
**Warehouse AGV**  
Aluminium housing  
Helical gears



**Tapping Machine ATC**  
Aluminium housing  
Double worm



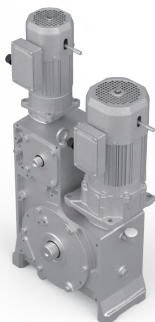
**Sand Spreader**  
Worm-Planetary gear  
Low temperature  
Epoxy coating



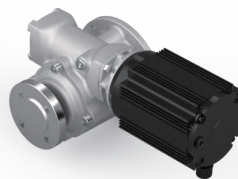
**Boat Lift Drive**  
Aluminium housing  
Phosphated shaft  
Custom pre-stage



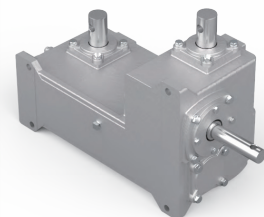
**Power Wheelchair**  
Aluminium housing  
Manual lock  
Integrated motor



**Foundry Automation**  
Two sets helical worm  
Shared housing



**Car Washing Machine**  
Water-proof design  
Corrosion resistant  
Custom output flange



**Grain Processor Drive**  
Three worm gears sets  
in one housing